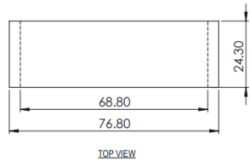
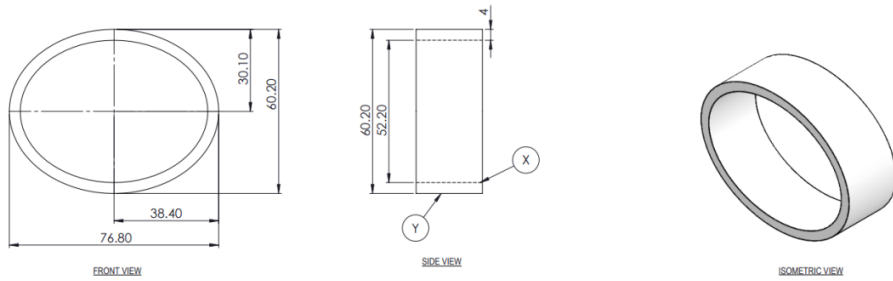


CUSTOMIZED FABRICATION DOMES

Ref: MDF/09/04/24/01

1. THE ORDER SHOULD NOT BE PREFERABLY SPLITTED. THE COMPREHENSIVE QUOTE CONSIDERING AVAILABILITY OF ALL COMPONENTS, FOR AT CSIO WILL BE CONSIDERED.
2. THE REQUIRED QUANTITY IS MENTIONED AND COMPONENTS SHOULD BE SEALED/PACKED AS PER THE ORIGINAL FACTORY PACKING. IF FOUND DAMAGED, WILL BE RETURNED.
3. THE PRICE SHOULD BE INCLUDING EX-CSIO DELIVERY.
4. THE VALID COC SHOULD BE SHARED.
5. PAYMENT AND OTHER THINGS AS PER CSIO NORMS
6. PL MAIL AT harry.garg@csio.res.in, pme@csio.res.in
7. QUOTE TIME 3 DAYS FROM DATE OF TENDER.
8. THE DETAILS OF USER WILL NOT BE SHARED.
9. SUPPLIER/OEM TO SHARE THE DELIVERY TIMELINES AFTER PO AND PAYMENT TERMS.. PURCHASE OF COMPONENTS/ PO IS PURELY THE PREROGATIVE OF CSIO
10. PL QUOTE WITH 18% GST AND DELIVERY TIMELINES OF 90 DAYS. SHARE AND ATTACH RELEVANT COMPANY DOCUMENTS.



NOTE:-
 1.PLEASE DO NOT REMOVE PROTECTIVE ADHESIVE TAPE DURING FABRICATION TO AVOID SCRATCHES ON SURFACE.
 2.FOR ANY MISSING DIMENSION REFER IGS/STEP FILE FOR MACHINING.
 3.ANTI REFLECTIVE COATING ON SURFACE 'X,Y'.
 4.DRAWING IS IN THIRD ANGLE OF PROJECTION.
 5.ALL DIMENSION ARE IN MM.

1. PLEASE DO NOT REMOVE PROTECTIVE ADHESIVE TAPE DURING FABRICATION TO AVOID SCRATCHES ON SURFACE.
 2. AVERAGE TRANSMISSION > 95% 45% (VISIBLE RANGE 400-700NM)
 3. EM/ENC SHIELDING CONDUCTIVE COATING ON SURFACE 'X' MIL-461C
 4. PROTECTIVE COATING ON TOP OF CONDUCTIVE COATING ON SURFACE 'X'
 5. ANTI-REFLECTION COATING ON SURFACE 'X,Y' 1 MIL 14806 A
 6. C SHAPED SILVER BUS BAR ALLAROUND ALONG THE EDGE OF THE COMPONENTS.
 7. SUBSTRATE DIMENSIONS : 89X77X32mm
 8. CLEAR APERTURE : 77X65X26mm
 9. ALL DIMENSIONS ARE IN mm.
 10. FOR ANY MISSING DIMENSION REFER IGS/STEP FILE FOR MACHINING.
 11. DRAWING IS IN THIRD ANGLE PROJECTION.
 12. FIRST OF SAMPLE TO BE APPROVED BY BEL.

WEIGHT = 55.07 gms
 BE PART NO. 3645 713 208 46

VER.	CH NO.	DATE	CHANGE	DO	ENGR	APVD	NUMBER	ITEM	QTY
PROVISIONAL									1

MATERIAL: POLYCARBONATE
 FINISH: SEE NOTES
 PROJECTION: DIMS IN MM
 NEXT ASSEMBLY: 1710.00X.063.02
 HELD IN: PKL

FABRICATION OF REFLECTORS